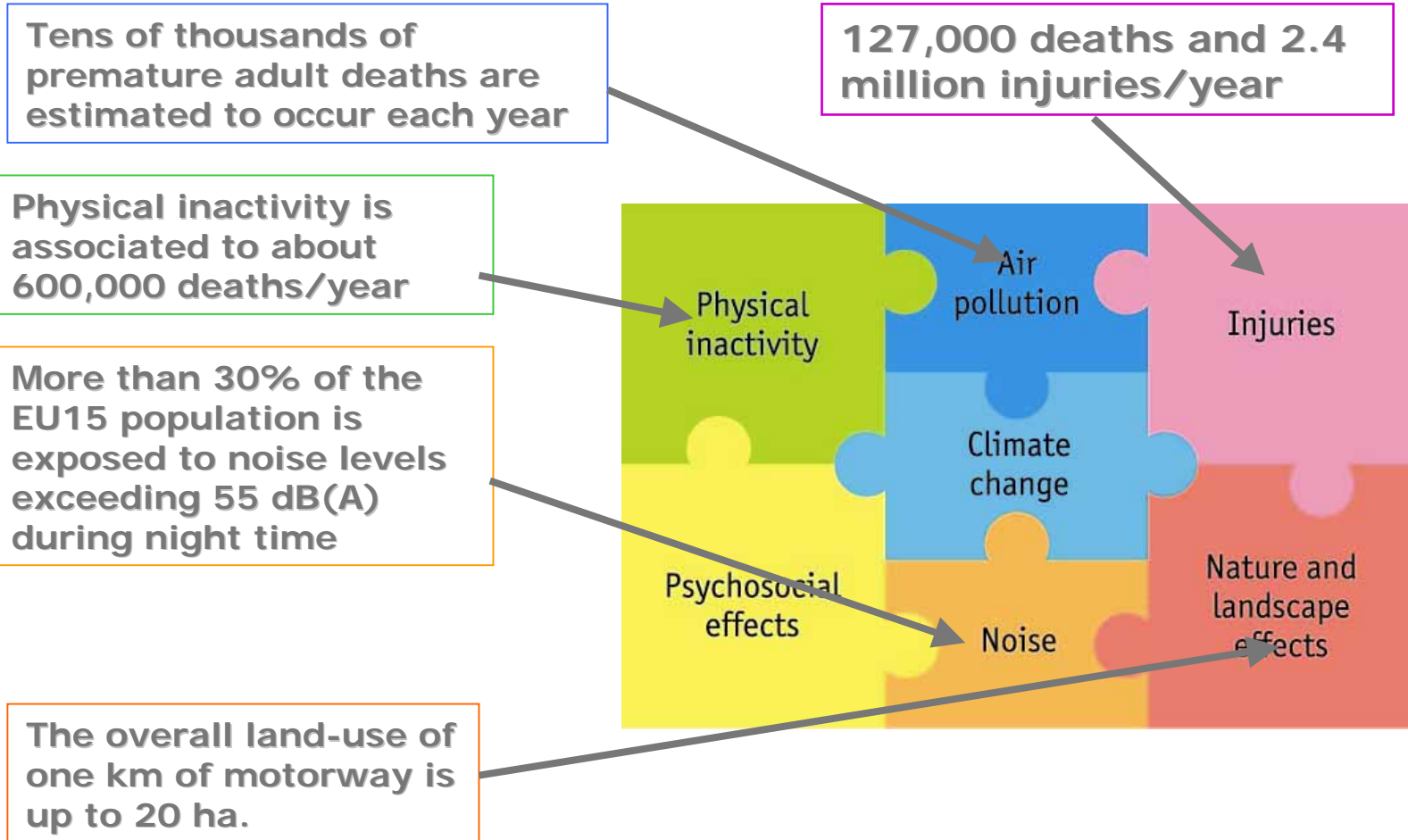


***Transport, Health and Environment***  
***Pan-European Programme (THE PEP)***

***An overview***

# THE PEP *Transport, Health and Environment* Pan-European Programme



//www.thepep.org/CHWebSite/



The screenshot shows the website for THE PEP Clearing House. The header includes the title 'THE PEP Transport, Health and Environment Pan-European Programme' and logos for WHO/Europe and UNECE. A navigation menu lists categories: Effects of transport, THE Integration, Urban transport, Demand management, and Cross-cutting issues. A sidebar on the left contains links for Home, THE PEP, language options (EN, RU, FR, IT), and various site functions like 'About THE PEP', 'CH in brief', 'News and events', 'CH information tree', 'Submit information', 'Links', 'Help', 'Disclaimers', and 'Send us your feedback'. The main content area features a banner for 'THE PEP Clearing House' with a background image of a road and a person walking. Below the banner, it states 'The Clearing House web site is in the pilot operation phase until the end of 2005.' and provides a description of the portal's purpose. A list of links includes 'Browse the Clearing House Information Tree', 'Latest additions', 'Glossary (available soon)', and 'Forum (available soon)'. A section titled 'Summary of latest added items' features two entries: 'Clean Accessible Transport for Community Health - CATCH' and 'GUIDEMAPS - Successful transport decision-making'.

- Established by representatives of transport, environment and health ministries at the 2<sup>nd</sup> High level Meeting on Transport, Environment and Health (Geneva, 5 July 2002)
- Provides a policy framework for capacity building and exchange of information in selected priority areas, including:
  - Integration of environmental and health aspects into transport policy
  - Promotion of more sustainable urban transport, including cycling and walking, in combination with public transport
  - Addressing the specific issues of south eastern and EECCA countries

## ***THE PEP provides***

- **A framework for equal representation and full ownership by the transport, health and environment sectors**
- **A unique example of cooperation among different organizations**
- **Implementation-oriented approach through concrete projects**

## ***THE PEP: operational arrangements***

- **Streamlined institutional setting:**
  - THE PEP Steering Committee, Bureau, Ad Hoc Task Forces
  - Focal points for THE PEP
- **Unique example of close inter-organizational cooperation**
  - Joint UNECE and WHO/Euro secretariat services
  - Co-ordination with other relevant IGOs and NGOs
- **Shared ownership and equal representation of three sectors of transport, health and environment**
- **Emphasis on transition countries**
- **Focus on a few key priorities**
- **Implementation oriented approach through concrete projects**

## ***Programme of Work for 2005-2007***

- ✓ THE PEP Clearing House on Transport, Environment and Health
- ✓ Sustainable and healthy urban transport and land-use planning
- ✓ Transport Related Health Impacts and their Costs and Benefits with a Particular Focus on Children
- ✓ **Guidance on institutional arrangements and mechanisms for integrated policy and decision-making**
- ✓ Promotion of safe walking and cycling in urban areas