

Transport Health Environment

Institutional Arrangements for Policy Integration

Berlin 23 – 24 January 2006

**Transferring policies: lessons from
European research + RAISE**

Carlo Sessa – ISIS - Rome

Building blocks of integrated LUT policies



Integrated LUT Policies

- Integrated LUT policies can contribute to sustainability
 - Reducing urban sprawl and the need to travel by car
 - Reducing the consumption of green land
 - Reducing disparities (e.g. in the access to basic services)
- Co-ordination of LUT measures
 - over time and space (e.g. between adjacent municipalities)
 - of complementary measures in the same field of intervention (e.g. road pricing and public transport improvement)
 - of measures of the same nature (e.g. national, regional and local fiscal incentives to sustainable behaviours)

Specific LUT Measures (Possible solutions)

- Public Transport oriented development

- Improving PT accessibility in existing settlements
- New PT oriented settlements
- Renovation of railway stations
- Renovation of station surrounding areas

Mobilisation of building land nearby rail corridors within urban areas

- Short distance structure development

- Short distance mixed-use
- Usage of inner city brownfield sites
- Pedestrian and cyclist friendly urban design

Create a pedestrian and cycling friendly site development

- Car restriction oriented development

- new car restricted developments
- Parking regulations in location policy
- Reallocation of existing urban public space

Limit the intrusion of cars in urban environment

Processes: planning

- Integrate **urban and transport plans and planning processes**
 - integration as a multi-sectoral (transport, land use) and multi-level (municipal, regional) task
- Design **packages of complementary measures**
 - combine push and pull strategies to promote alternatives to car use, give attention to soft policies
- Apply **integrated policy assessment tools** for policy evaluation
 - use of indicators to monitor output, result and impact of policies

Processes: implementation

- Presence of **broad strategic concepts** integrating sectoral policies
 - assure that an agreement on strategic issues is achieved between relevant authorities (i.e. define a vision for the city)
- **Integrated sectoral policies** as basis for effective implementation
 - Support integrative processes in accordance with the strategic concept
- Apply **innovative forms of interdisciplinary** co-operation across different departments and government tiers
 - create interdisciplinary working groups to co-ordinate tasks and ensure realisation of projects (i.e. partnerships, regional co-operation)
- Apply a **step by step process**
 - start by the implementation of measures limited to a specific area where more favourable conditions are met

Processes: Participation

- **Consider openly the results of participation** to stimulate the involvement of a wide range of stakeholders
 - ensure that results will be seriously considered
- Provide a **starting document** to facilitate public involvement
 - Include a clear description of the process, goals and means available as well as responsibilities and tasks
- Avoid **consultation “fatigue”**
 - ensure that results from previous exercises have been checked so that synergies could be obtained and resources saved
- **Capacity building** as a pre-condition to tackle with social exclusion
 - ensure that all citizens are prepared and skilled to take part in the exercise, otherwise training projects and support measures are needed

Outcomes

- Solutions often require **reorganisation** of institutions, **changes in their relationships** and **territorial competencies**:
 - Co-ordinating bodies
 - Aggregation or separation
 - Covenants and partnerships
 - Adaptation of legislation
 - Financial arrangements
- Most case studies show the importance of
 - understanding user needs
 - combine complementary policies in balanced packages (over time, space and type of measures)
 - public participation and involvement as a measure to increase acceptability and influence people's behaviour

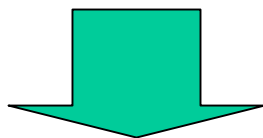
Transferability of good practice

- **Transferability** do not focus on individual technical or operational features of instruments, but on **how a good practice experienced in one city may fit** with the context of another city
- There may be the **need to transfer** not only the practice but also **to transplant legal or institutional aspects**
- Mechanisms to **support policy transfer** could be:
 - dissemination
 - common objectives (e.g. sustainable development strategies)
 - common projects or project frameworks
 - networking and exchange of experiences (e.g. URBACT)

Transferability of good practice: main lessons

- Assess the different types of policy transfer needed:
 - territorial transfers between jurisdictions at the same level (horizontal transfer)
 - vertical transfer between institutions at different levels
 - transplanting of institutions and instruments to ensure compatibility of the institutional context
- Follow a sequence of phases /stages
 - demonstration (identify best practice in original city)
 - transferability (appraisal of best practice compatibility)
 - assessment (identify barriers amenable to change and success factors)
 - implementation (implement good practice in receptor city)
- Take into account the processes to assist transferability
 - networks, co-operative projects, skills exchange
- Remember that acceptability of certain measures can influence the success of the transfer process
 - *participation can help to raise awareness of problems and build acceptance of solutions*

Why to RAISE citizens'
awareness and participation
matters for a real policy
integration ?



The RAISE example





Urban Knowledge ...

Each department or expert in a specific field utilises criteria, methods procedures and vocabulary specific to the disciplines it belongs to. These criteria and methods are often unfamiliar to the experts in other sectors or disciplines involved in the same project ...

... Urban knowledge is not a new discipline or a new field of science but is best thought of as a way of drawing together knowledge and knowledge production, which is often generated in separate research fields and sectors of practice.

Partnership is needed between humanist, social scientists, medical scientists, natural scientists, architects, planners and engineers, and many of the solutions occupy the interface between different sectors and scientific fields ...

Where the citizens stand in this picture ?



Citizens Knowledge ...

The knowledge of local people has a comparative strength with what is local and observable by eye, changes over time, and matters to people. It has been undervalued and neglected. But recognising and empowering it should not lead to an opposite neglect of scientific knowledge ...

... The key is to know whether, where and how the two knowledges can be combined, with modern science as servant not master, and serving not those who are central, rich and powerful, but those who are peripheral, poor and weak, so that all gain.

Quoted from Chambers, R (1997) *Whose Reality Counts ? Putting the First Last*



What is RAISE ?

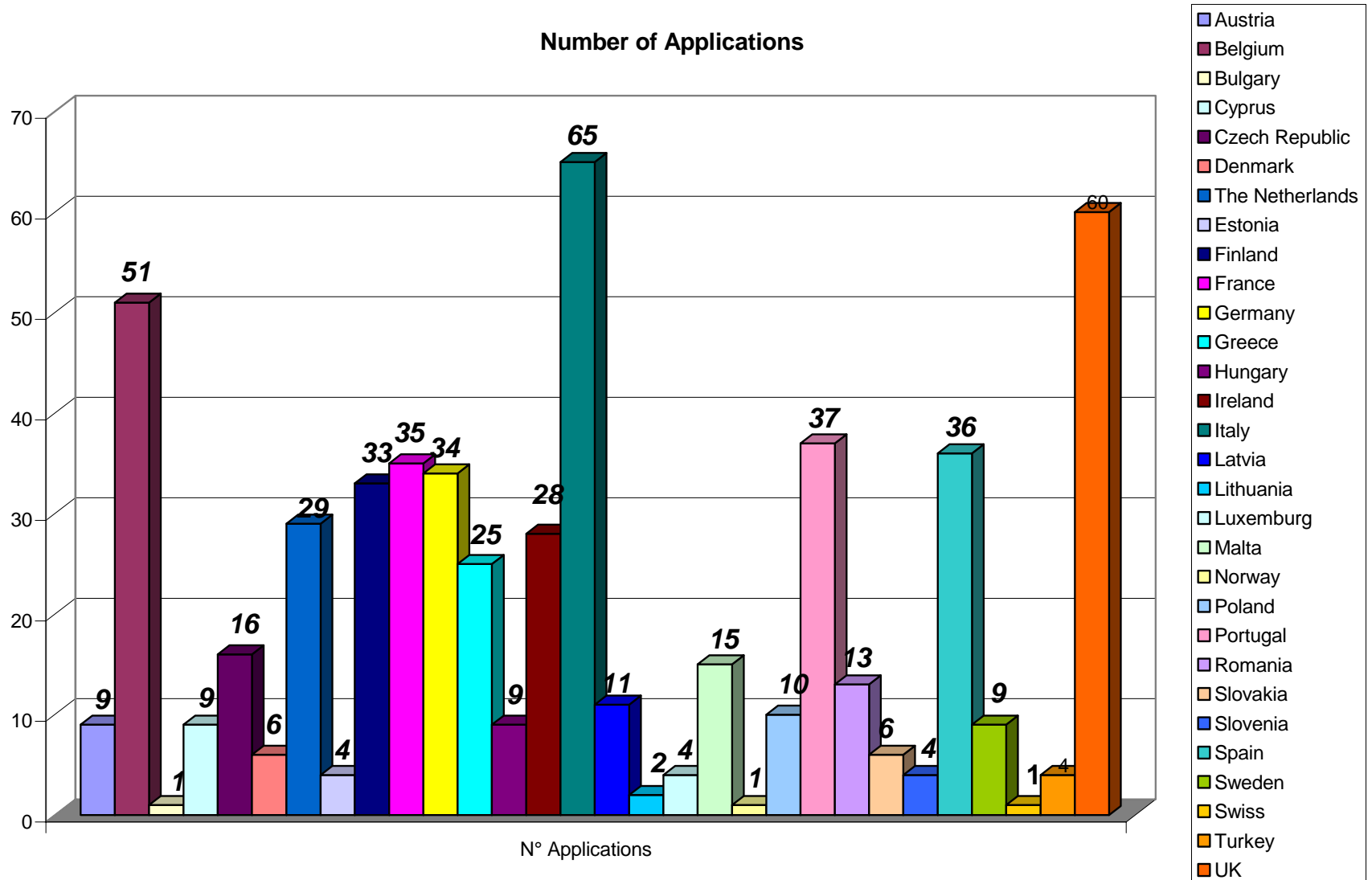
RAISE is a Specific Support Action in the FP6 “Global Change and Ecosystems” Priority, whose aim is to enhance the citizens’ awareness of EC research on urban sustainability matters and to test the acceptability of new approaches and technologies by the user community

The aim is being achieved by organising a “Citizens’ conference” with a sample of citizens from the 25 EU Member States and one citizen from a candidate country (Romania)

This is the first experiment at the EC level of “putting the citizens first” in the evaluation of scientific results related to the quality of urban life in Europe !!



The Citizens Conference applicants by country





The Citizens “Voice”: the disconnection of global and local thinking

The daily life of citizens, especially in urban areas, is deeply influenced by the city visioning and by the planning process which is carried out mainly by the local, national and european decision-makers, as well as by the experts in this area. There is often, nevertheless, a substantial divorce between their vision and the one of the users of the city, sometimes less clear and concept-supported, but many times more practical.”

“The perception I have of my city environment is the lack of global thinking. Each actor in the city (citizen, business, public entity, ...) acts according to its own interest or mission, leading to a certain anarchy going against the majority’s welfare. Most people seems to consider the current situation as natural and acceptable. I believe that it could be much improved, if the different actors started working together.”

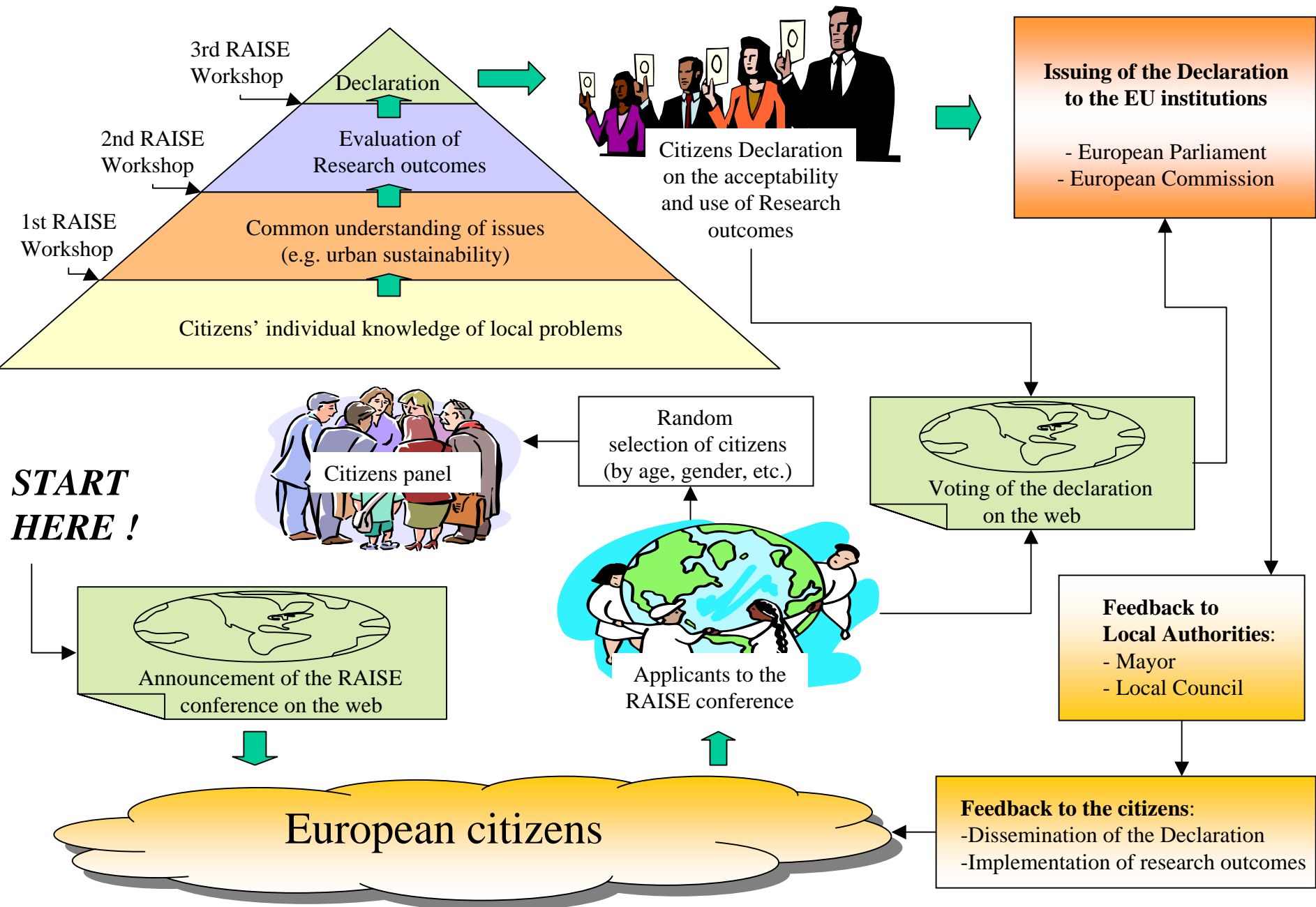


The Citizens “Voice”: two different views of EU !

“My perception is that our environment becomes each year better, but the average citizen in my country don’t realise that. They are often claiming and pointing what doesn’t work how it could, and don’t see the gap between what we now have and what we only 15 years ago had. I travel quite often. I was often in Poland, the Czech Republic and other western European countries like Germany and Switzerland. I can see the difference between these countries and must say that when it goes better, it is Europe’s result. And it goes always better ! So Europe is really a chance, even if everything is not always OK.”

“To my thinking EU is nothing more than a terrible bureaucracy system and I think that form is an example. Do you normally follow European policies and initiatives ? Yes or no ? I haven’t know any except the day without cars but in the form I need to answer yes or no. It’s my life dream for an answer little bit more than yes or no”

The RAISE concept



Who we are

“We are a group of 26 European citizens of different countries, age groups and occupations.

We are not professional experts on sustainable development, but lay people, living and working in the cities of Europe”



Our task

“The European Commission, DG Research, asked us to give our visions and hopes about the future of cities and our opinion about its EU research programme City of Tomorrow and Cultural Heritage”



What we did

“We started from concrete cases presented in a series of workshops, compared them with our own experiences and developed our own opinion on these topics:

- *Urban governance*
- *Sustainable transport*
- *Sustainable built environment*
- *Cultural heritage”*



**The full version of the Citizens' Declaration
is available on:**

www.raise-eu.org

